

What is SAFE

Short introduction

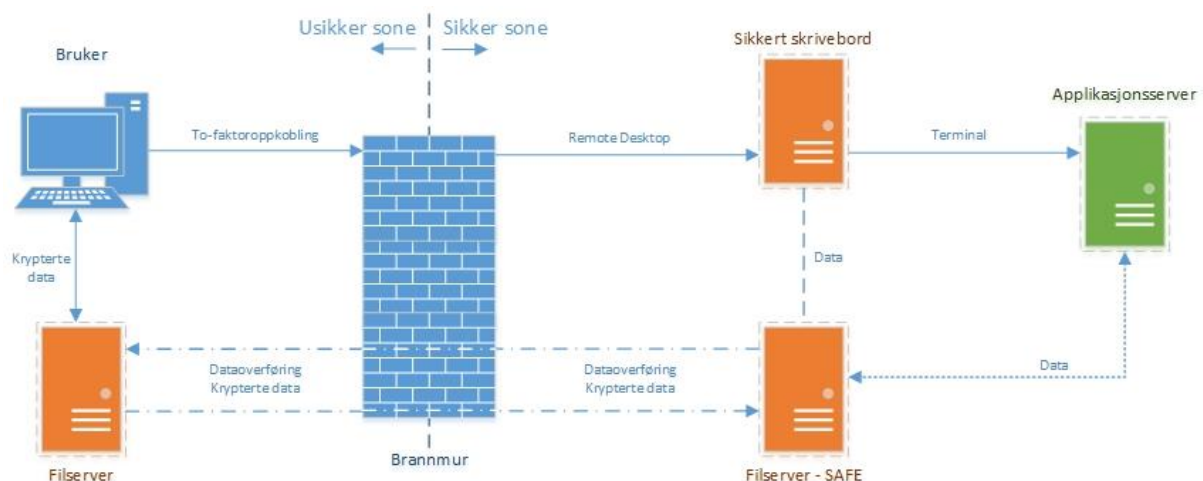
At the IT-department at the University of Bergen, we have developed a solution for secure processing of sensitive personal data in research, SAFE. SAFE is based on “Norwegian Code of conduct for information security in the health and care sector” (Normen) and ensures confidentiality, integrity, and availability are preserved when processing sensitive personal data.

Through SAFE, the IT-department offers a service where employees, students and external partners get access to dedicated resources for processing of sensitive personal data.

The SAFE team will set up a secure desktop based on the information from the project manager and install relevant software. A suitable data share is set up with security settings provided by the project manager. At this point, the project manager will have access and can start transferring data to SAFE.

The access document is only available for the project manager and contains authoritative information on all users in the project, including name, user-id, cell phone number, and access level. To initiate a change in access, the project manager updates the access document and creates an issue in our ticketing system. Access to SAFE requires a University of Bergen computer account. However, each department have approvers who can create external accounts for partners if needed.

The principle



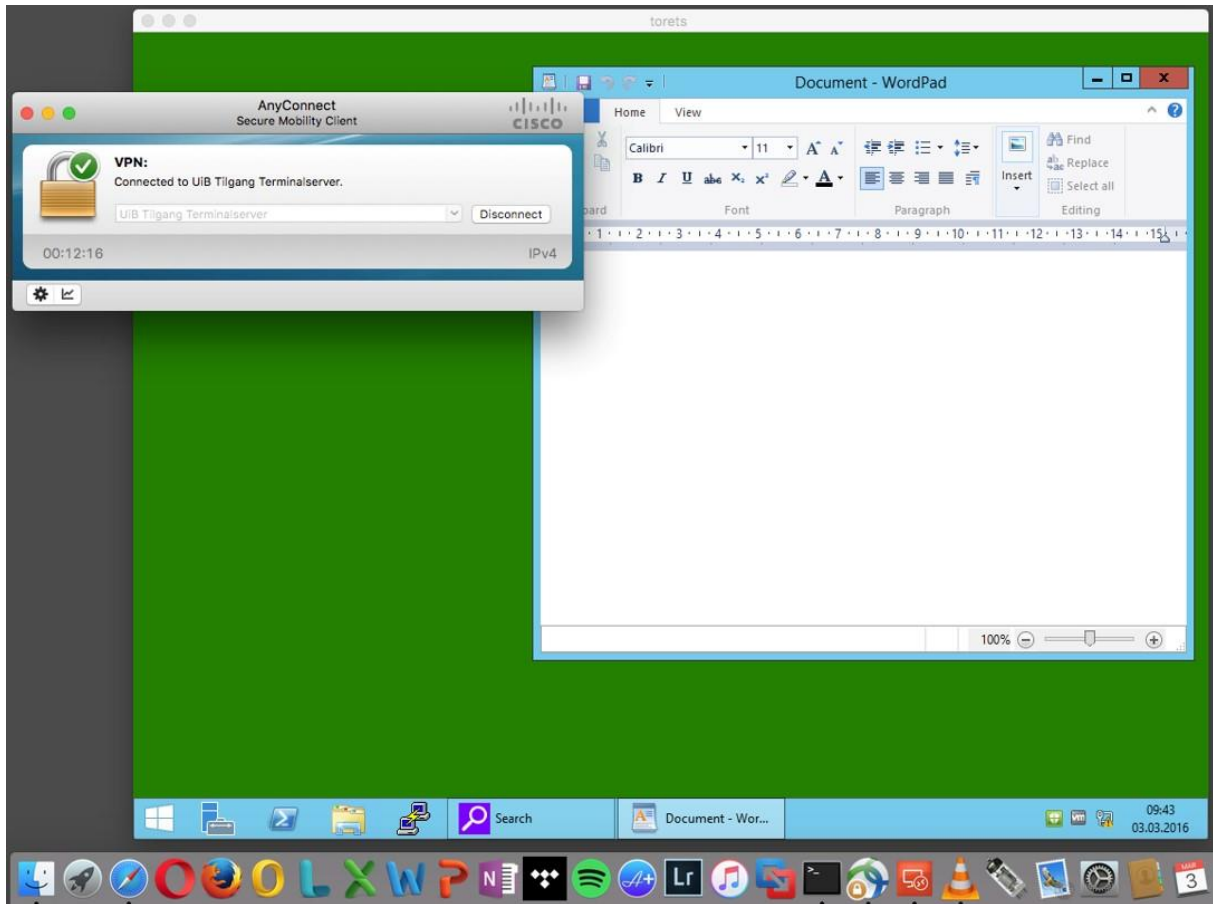
The way SAFE works, you connect to the secure desktop by first using Cisco AnyConnect, a VPN client supporting multi factor authentication (MFA) to get to the secure zone. Then, you can start the remote desktop software and provide the name of the secure desktop for your project. If your project has its own Linux application server, it will be available from the secure desktop.

Files can be imported to and exported from your secure desktop. A separate document describes this process in detail.

You will need to install Cisco AnyConnect and for Mac and Linux users remote desktop software is also needed. A document describing the process is included as well.

Secure desktop

The picture below shows what the secure desktop looks like. In the background you see the typical Mac OS X desktop and the secure desktop is the part that is green. All the way in the front, the Cisco AnyConnect software is shown.



Securing the desktop

Securing the desktop has two parts.

1. To access the secure desktop you need to provide two factor authentication, something you know (username and password) and something you have (one-time code from smartphone).
2. Limited options from the secure desktop. You will not be able to:
 - Connect to the Internet
 - Transfer data to/from the outside (except by import/export)
 - Print documents